

Business Computers
Software, Inc.

Time Matrix
Time Clock

 Microsoft
Dynamics GP

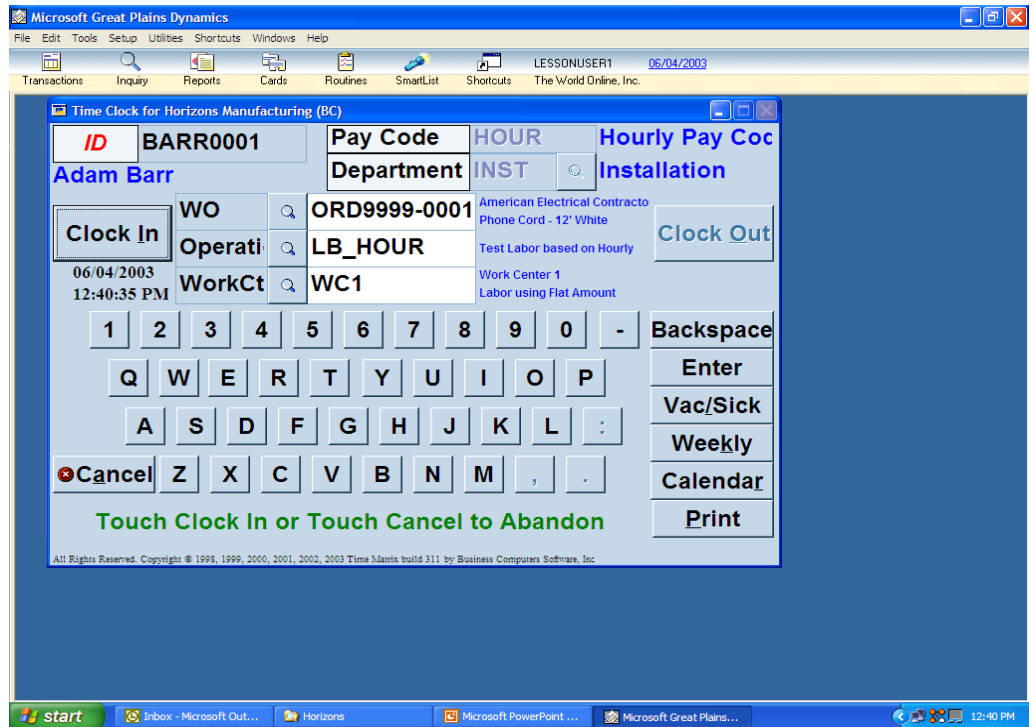


Time Matrix from Business Computers Software, Inc., is fully integrated to Microsoft Dynamics GP and offers the same "look and feel."

Microsoft
GOLD CERTIFIED
Partner

Time Matrix

for Microsoft Business Solutions-Great Plains Horizons International Manufacturing Touch Screen Monitor Time Clock



The screenshot shows the 'Time Clock for Horizons Manufacturing (BC)' window. It features a top menu bar with 'File', 'Edit', 'Tools', 'Setup', 'Utilities', 'Shortcuts', and 'Windows'. Below the menu is a toolbar with icons for Transactions, Inquiry, Reports, Cards, Routines, SmartList, and Shortcuts. The main area contains a form with the following fields and buttons:

- ID:** BARR0001
- Pay Code:** HOUR
- Department:** INST
- Hourly Pay Coc:** Installation
- WO:** ORD9999-0001
- Operati:** LB_HOUR
- WorkCt:** WC1
- Clock In:** 06/04/2003 12:40:35 PM
- Clock Out:** (button)
- Buttons:** 1-0, Backspace, Enter, Vac/Sick, Weekly, Calendar, Print, Cancel, Z, X, C, V, B, N, M, comma, period.
- Text:** American Electrical Contracto, Phone Cord - 12' White, Test Labor based on Hourly, Work Center 1, Labor using Flat Amount.
- Footer:** All Rights Reserved. Copyright: © 1998, 1999, 2000, 2001, 2002, 2003 Time Matrix build 311 by Business Computers Software, Inc.

Time Matrix from Business Computers Software, Inc., is a full-featured time system fully integrated with Microsoft Business Solutions-Great Plains and Horizons International Manufacturing.

Time Matrix has the same "look and feel" as other Great Plains modules because it was developed in Dexterity – the programming language used for Great Plains. This provides true integration with Great Plains. Time entries that originate in Time Matrix are automatically integrated to Horizons Manufacturing.

Touch Screen Monitor Time Clock replaces a conventional electronic/mechanical time clock. It is used to clock in employees at the beginning of their shift and to clock them out at the end of their shift. Touch Screen Monitor Time Clock uses the employees' ID and Pay codes entered into Great Plains Payroll.

It uses Work Orders, Cost Centers, Operations and Work Centers with Horizons Manufacturing. Customer information is displayed from Great Plains Receivables Management.

Work Orders can easily be changed by touching "Change Job." This Clocks Out the old WO and Clocks In the new WO.

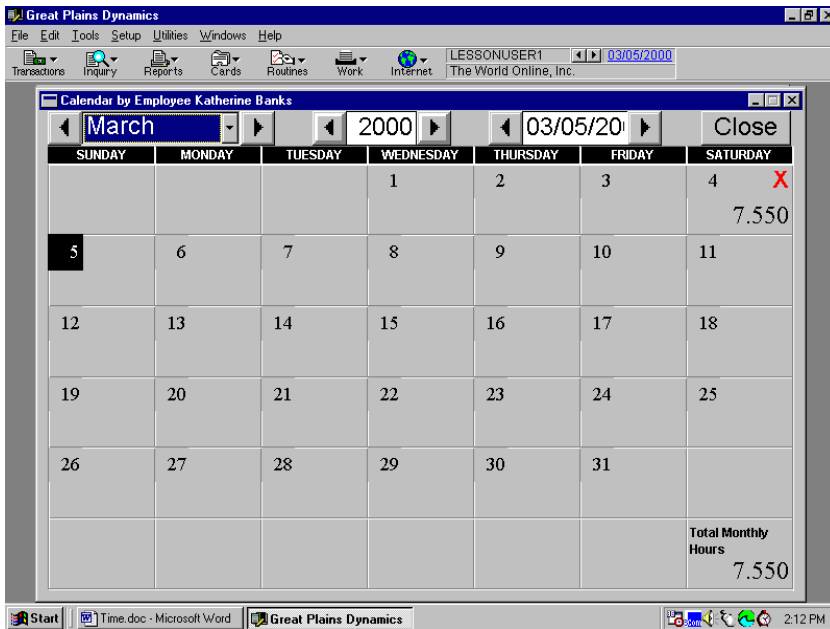
Touching the Print button allows time entries to be printed for any pay period to either the screen or a printer.

Company-wide, departmental and individual employee messages can be displayed.

Touch Screen Monitor Time Clock has a keyboard with letters and numbers on the monitor. It uses large keys and buttons to make it easy to see and touch with a finger. It is easy to use by non-computer-literate employees, with a look and feel similar to an ATM machine.

Touch Screen Monitor Time Clock software runs on a personal computer with Windows 95/98/NT/2000/XP that has Great Plains loaded. A regular monitor, mouse and keyboard can also be used in place of a touch screen monitor.

Contact your local Microsoft Business Solutions-Great Plains reseller to discover how Time Matrix can work for you.



Employee Calendar for Horizons Manufacturing

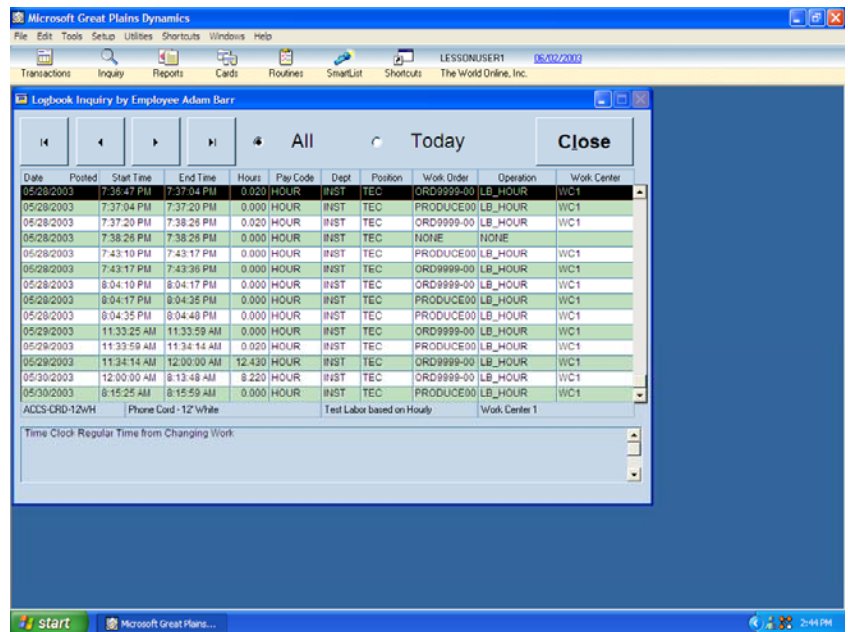
- The inquiry only calendar is accessed by touching Calendar on the Touch Screen Time Clock.
- The employee calendar shows the number of hours worked each day and a monthly total.
- Overtime, Vacation, Holiday and Sick are denoted with O, V, H & S.
- The month, year, and date browse buttons can be touched to view times for other months.
- Touching a specific date, zooms to the Logbook showing only transactions for the date touched.

WO Calendar for Horizons Manufacturing

- Displays time entries for one Horizons Manufacturing WO with all employees' time included.

Employee Logbook for Horizons Manufacturing

- The inquiry only Horizons Manufacturing Logbook is accessed by touching Logbook on the Touch Screen Time Clock.
- An employee clocking out of the time clock or changing Horizons Manufacturing WOs creates a time transaction in the Logbook.
- Logbook time transactions record regular time, overtime, and breaks from the Touch Screen Time Clock.
- The Horizons Manufacturing Logbook shows the Employee, Start Time, End Time, Hours, Department, Position, Pay Code, Customer, Horizons Manufacturing WO, Cost Center, Operation and Work Center.
- The Logbook report is used to verify employee shift and weekly hours.
- Weekly overtime is automatically calculated.
- Time from the Logbook is posted to Horizon Production Time. This eliminates the need for time-intensive manual data entry.



- Accounting and supervisors can access the Logbook with an editable window. In this mode, Horizon Manufacturing time entries can be changed, added or deleted. This window can be used as a front-end to Horizon Production Time for fast, efficient data entry, even without using the touch screen time clock.

Time Matrix and Touch Screen Monitor Time Clock are registered trademarks of Business Computers Software, Inc. All other products and company names may be trademarks or registered trademarks of their respective companies. All products and services are subject to change without notice. No part of this publication may be duplicated by any means without permission from Business Computers Software, Inc. Copyright 1998-2008 Business Computers Software, Inc. All rights reserved. Printed in the USA.